

LF 300

-30°C/
-10°C

LF SERIES

- White or stainless steel exterior
- Stainless steel interior
- Automatic door closing
- Air forced cooling
- Adjustable shelves
- Castors
- Key lock on door
- Reversible door

ALL STANDARD FEATURES

- Micro processor controller with digital display
- Approx. 72 hours battery back up for alarms, loggings and temperature display in case of power cut
- Prepared for GSM alarm
- Auto cycle in case of probe failure
- Direct download of logged data via USB cable
- Direct upload of new parameter via USB cable
- 3-level password protected
- Display text in English
- Integrated data logger
- RS485/RS232 interface
- Visual and acoustic alarm
- Adjustable high/low temperature alarm
- Power failure alarm
- Probe failure alarm
- Instrument failure alarm
- Open door alarm
- Contact for remote alarm

Unite the latest technology in one freezer, the new Arctiko Laboratory line with many features and sizes is produced with attention to details.

No matter which product you choose, its built after the same strict guidelines.



Battery backup - 72 hours



Integrated data logger with memory



RS485/RS232 interface



On/off protection



MODEL	LF 300
Item code	DAI 0225
Dimension exterior WxDxH (mm)	520 x 700 x 1997
Capacity (L)	346
Temperature range (°C)	-30 / -10
Power supply (V)	230
Frequency (Hz)	50/60

ARCTIKO
The art of simplicity®

Technical specifications

Item code	DAI 0225
Dimension exterior WxDxH (mm)	520 x 700 x 1997
Capacity (L)	346
Dimension interior WxDxH (mm)	400 x 575 x 1505
Insulation (mm)	60
Temperature range (°C)	-30 / -10
Max. ambient temperature (°C)	32
Power supply (V)	230
Frequenzy (Hz)	50/60
Power consumption (KWH/24H)	8,7
Current (A)	1,2
Weight (Kg)	103
No. of compressors	1
Visual / acoustic alarm	Yes
Power failure alarm	Yes
Adjustable high/low temperature alarm	Yes
Open door alarm	Yes
Probe failure alarm	Yes
Alarm display as text - not codes	Yes
Contact for remote alarm	Yes
Prepared for GSM alarm module	Yes
Approx. hrs of battery back up for alarms and temperature display in the event of power cut	72 hours
Porthole for installation of PT100/CO ₂ back up	No
Digital display	Yes
Data logger	Yes
RS 232 interface	Yes
RS 485 interface	Yes
USB cable up/down load	Yes
Defrost manual/auto	Yes
Castors	Yes
Chart recorder	Optional
Shelves (pcs) / drawers (pcs)	3
Basket (pcs)	No
Sub doors (pcs)	No
Lighting	No
Lock	Yes
Inner liner material	Stainless steel
Cabinet material	Varnished steel / stainless steel*
Colour (exterior)	White / stainless steel*
Refrigerant	R404a

* Optional, please contact us
We reserve the right to change specifications without notice and subject to errors.

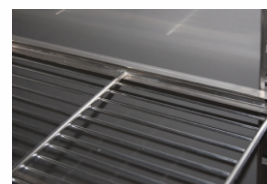
Optional



1 The GSM alarm module sends a SMS message to one or several coded telephone numbers in case the temperature exceeds a fixed range.



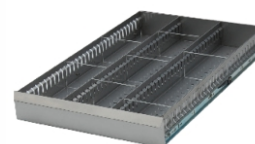
2 SVS voltage stabilizers for excellent output voltage stability in case the voltage rises or drops.



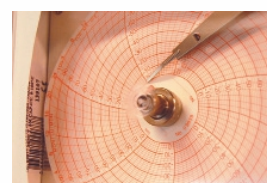
3 The stainless steel wire shelf is of high quality and ensures a long life span.



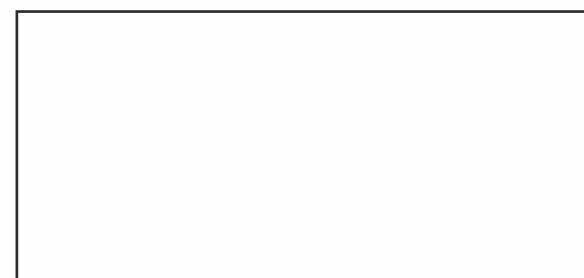
4 The perforated stainless steel shelf ensures stable storage due to its flat surface.



5 The stainless steel drawer with adjustable dividers is a perfect option for flexible and categorized storage.



6 Chart recorder for documentation of the temperature condition over a certain period of time.



www.arctiko.com
www.co2care.eu